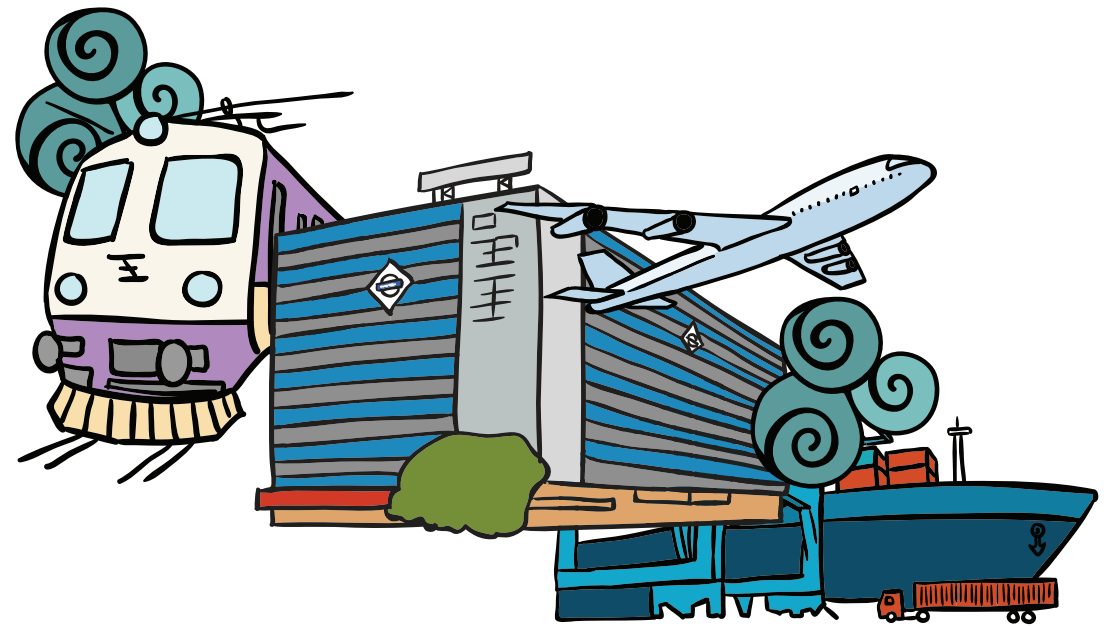


Locales in this category have hosted shoots of prominent films such as **A Mighty Heart, Phantom, The Villain, Kaminey, The Attacks of 26/11, Phata Poster Nikla Hero, Yeh Jawani Hai Deewani, Hasee Toh Phasee, Dabangg, Khele Hum Jee Jaan Se, Prem Ratan Dhan Paayo, PK, Welcome, Dhoom, Tarzan-The Wonder Car, Fanaa, Dedh Ishqiya, Bullet Raja, Bajirao Mastani, Jane Tu Ya Jaane Na, Raju Chacha, Khakee, Ghulam Begum Badshah, Vanshvel and Jarab** Reality series **The Amazing Race** was also shot in one of the locales in this category

Stations Ports Airport Road

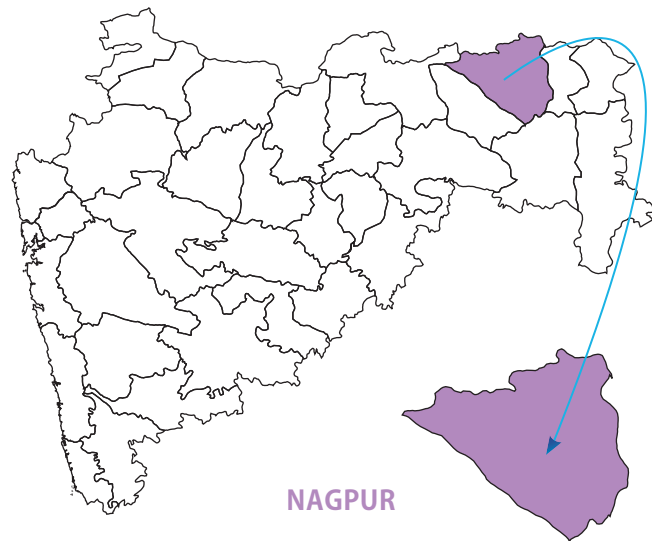




BABASAHEB AMBEDKAR INTERNATIONAL AIRPORT – CONNECTING VIDARBHA

Nagpur’s Dr Babasaheb Ambedkar International Airport handles ~4,000 passengers every day, catering to four domestic airlines and two international airlines that connects Nagpur to Sharjah, Doha and 12 domestic destinations.

Spread over 1,460 acres, the airport is home to the Nagpur Air Force Station. The new Integrated Terminal Building covers an area of 17,500 sq metres with 20 check-in counters and a capacity to handle 550 passengers during peak hours. It is equipped with passenger bridges with visual docking guidance system and baggage conveyor belts. Besides a car park that can accommodate 600 vehicles, eight parking bays have been recently added to take the number of bays up to 18. The airport provides a perfect location for shooting because it is modern without being very busy, thereby requiring fewer clearances from government agencies.



LOCATION FACT FILE

- Nagpur city, where the airport is located, has a population of ~24,05,665.
- Nagpur has an average high temperature of 44 degree Celsius and a low of 13 degree Celsius.
- It is connected by rail (Nagpur, 11 km) and road (Mumbai-Nagpur, 820 km; Pune-Nagpur, 720 km).
- Nearby attractions include Central Museum, Deekshabhoomi, Nagzira Wildlife Sanctuary, Navegaon National Park, Tadoba Andhari Tiger Reserve, Pench National Park, Mansar, Ramtek, etc.
- Several star and budget category hotels are available in Nagpur.
- Restaurants and catering facilities are also plenty.
- Nagpur has good medical facilities as well as speciality hospitals.
- Support infrastructure in terms of pre- and post-production equipment, artistes, technicians, etc. can be sourced from Mumbai/Pune.

PERMISSION AND FEE DETAILS

AUTHORITY

Airports Authority Of India

CONTACT DETAILS

Airport Director

Dr. Babasaheb Ambedkar International Airport

Nagpur, Maharashtra – 440005

Tel: +91-712-2807501 / 6450835

Telefax: +91-712-2288007

E-mail: apdnagpur@aai.aero

FEE (INR)

- Commercial Film Shooting INR 28,000 per hour
- Commercial Photo/Videography INR 14,000 per hour
- Non-Commercial Videography INR 3,000 per hour and
- Non-Commercial Still Photography INR 300 per photo

AUTHORITY

Revenue Department

CONTACT DETAILS

District Collector, Nagpur

Collector Office, Civil Lines

Nagpur, Maharashtra – 440001

Tel: +91-712-2564973 / 2561967

E-mail: collector_nagpur@maharashtra.gov.in

collector_nagpur@rediffmail.com.

FEE (INR)

Fee is decided on a case to case basis

AUTHORITY

Police Department

CONTACT DETAILS

Commissioner Of Police

Police Commissioner’s Office, Gokul Peth,

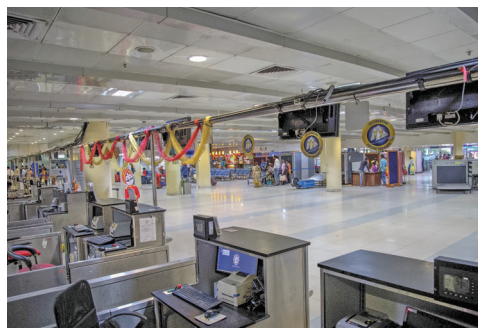
Nagpur, Maharashtra – 440001

Tel: +91-712-2560601 / 2561321

Web: www.nagpurpolice.nic.in

FEE (INR)

Police protection charges as applicable, depending on the number of personnel deployed

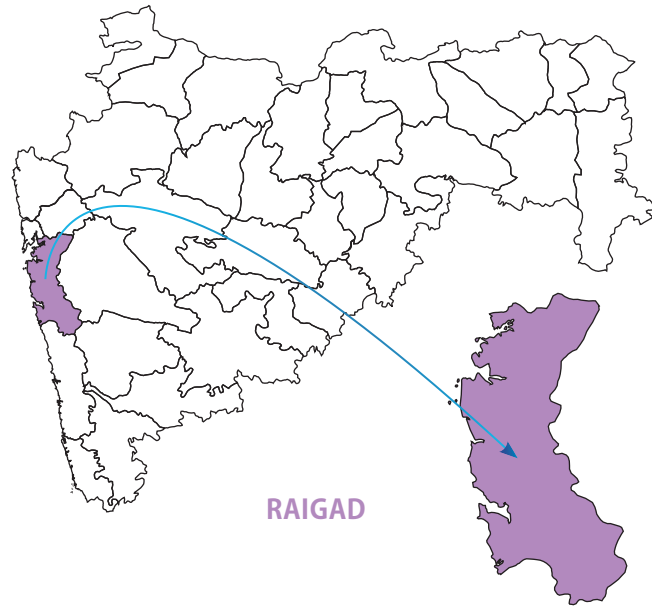




CHOUK – BOLLYWOOD’S MOST FILMED STATION

Located on the Karjat-Panvel line of Central Railway, Chouk is an ideal location to capture the timeless beauty of Indian Railways. This station lies along the state highway, next to a small village called Chouk Manivali. The station has two platforms and an overbridge connecting them.

The station is a favourite among film-makers owing to its proximity to Mumbai and light rail traffic.



LOCATION FACT FILE

- Chouk railway station is in Raigad district and easily accessible by road – from Mumbai as well as Pune.
- Raigad district has an average maximum temperature of 38 degree Celsius and a minimum of 12 degree Celsius.
- It is connected by rail (Karjat railway station, 10 km), air (Mumbai, 58 km) and road (Mumbai, 55 km).
- Several star and budget category hotels and resorts are available in Lonavala and in Karjat. Luxury bungalow stay options are also available at both locations.
- Though there is no designated parking area, the open space around the station can be used to park 7-10 cars.
- Mumbai and its surrounding areas have good medical facilities as well as speciality hospitals. Lonavala can also be easily reached in case of any medical emergency.
- Support infrastructure in terms of pre- and post-production equipment, artistes, technicians, etc. can be sourced from Mumbai/ Pune.
- Films such as *Dabangg*, *Khele Hum Jee Jaan Se*, *Prem Ratan Dhan Paayo* and *PK* have been shot here.

PERMISSION AND FEE DETAILS

AUTHORITY

Central Railway

CONTACT DETAILS

Senior Public Relations Officer

Central Railway Senior PRO

General Manager's Office, Ground Floor, Suburban Line CST, Maharashtra

Tel: +91-22-22613562

E-mail: cpro@wr.railnet.gov.in

FEE (INR)

There is a separate fee for hiring station and trains.

Security deposit and comprehensive insurance coverage rates are provided by the PRO's office.

AUTHORITY

Railway Police Force

CONTACT DETAILS

Police Inspector

Karjat Railway Station

Tel: +91-2148-222110

FEE (INR)

Police protection charges as applicable, depending on the number of personnel deployed





मुंबई पोर्ट ट्रस्ट
मालवा, मद्रास, (पुणेची) मद्रास
MUMBAI PORT TRUST
MUMBAI PORT TRUST

QUEEN

FISHING PORTS – THE FERRY WHARF AND THE OLDEST DOCK

Bhaucha Dhakka, also known as Ferry Wharf, was built by Lakshman Hari Chandarjee Ajinkya and serves as a port for numerous fishermen and for ferry trips to Alibaug. It offers magnificent view of famous buildings such as the Gateway of India and Hotel Taj Palace and other high-rise residential towers.

The Sassoon Docks, one of the oldest docks in Mumbai, was built by banking and mercantile company David Sassoon & Co on reclaimed land in 1875 CE (Common Era). The dock, which is open to public, is the main fish loading and trading centre in South Mumbai. Mud-brown sting rays are a common sight in the vicinity of the dock. It has one of the biggest fish markets and auction houses in the city.



LOCATION FACT FILE

- Mumbai City district has an average high temperature of 34 degree Celsius and low of 18 degree Celsius.
- It is connected by rail (Dockyard Road, 500 metres), air (Mumbai, 18.4 km; Pune, 157.5 km).
- Nearby attractions include Haj Ali, Worli Sea Face, Mahalaxmi Temple, Breach Candy, Jijamata Udyan and Colaba Causeway, Navy Nagar, Gateway of India, etc.
- Several star and budget hotels are available across Mumbai.
- Catering facilities and restaurants offering various kinds of cuisine are abundantly available in Mumbai.
- Mumbai has good medical facilities as well as speciality hospitals.
- Mumbai being the hub of Indian cinema has ample support infrastructure in terms of pre- and post-production equipment, artistes, technicians, etc.
- Reality series *The Amazing Race* was shot in Sassoon Docks.

PERMISSION AND FEE DETAILS

AUTHORITY

Public Relation Office

CONTACT DETAILS

Secretary

Public Relation Office, 2nd Floor, Port House
S. V. Road, Ballard Estate, Mumbai, Maharashtra – 400001
E-mail: mbpt@vsnl.com
Web: www.mumbaiport.gov.in

FEE (INR)

Fee charged by the authority are:
INR 20,000 for first 8 hours
INR 40,000 for 8-16 hours
INR 20,000 refundable deposit

AUTHORITY

Assistant Commissioner Of Customs (Preventive)
(General), Mumbai Office

CONTACT DETAILS

Assistant Commissioner Of Customs

Commissioner Of Customs (Preventive)
New Customs House, Ballard Estate
Mumbai, Maharashtra – 400001
Tel : +91-22-22757702

FEE (INR)

No fee is charged by the Customs Department

AUTHORITY

Police Department

CONTACT DETAILS

Senior Police Inspector, Theatre Branch

Desk 10, Police Commissioner's Office, Dr D N Road, Fort,
Opposite Crawford Market
Mumbai, Maharashtra – 400001
Tel: +91-22-22620111

FEE (INR)

Police protection charges as applicable, depending on the number of personnel deployed

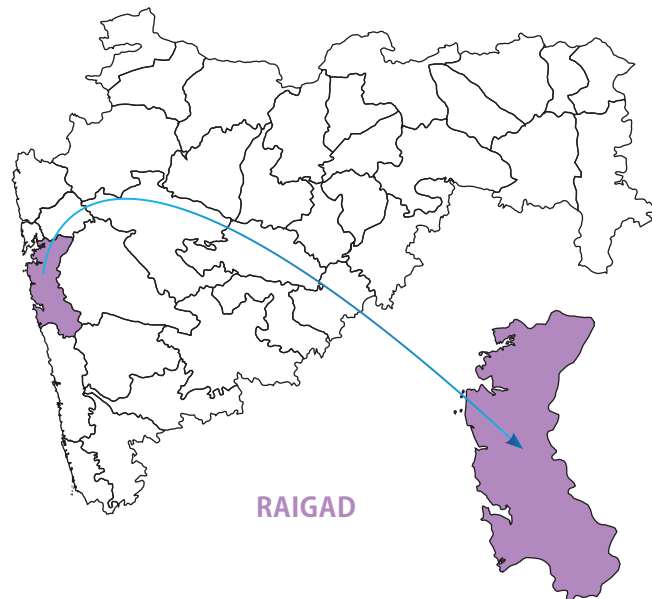




JAWAHARLAL NEHRU PORT TRUST – INDIA'S LARGEST CONTAINER PORT

Commissioned in 1989, the Jawaharlal Nehru Port Trust (JNPT) (formerly known as the Nhava Sheva Port) is located within Mumbai harbour. It occupies a place of prominence among major Indian ports. Characterised by highly-automated round-the-clock operations, it has demonstrated potential and capacity and is today counted as India's first major hub port.

JNPT provides the perfect location for shooting in the midst of numerous colourful cargo containers and huge cargo ships.



LOCATION FACT FILE

- JNPT is located next to Uran city in Raigad district which has a population of ~30,000. It is also close to the business centre of Navi Mumbai.
- Uran city has an average high temperature of 38 degree Celsius and a low of 12 degree Celsius.
- It is connected by rail (Panvel railway station, 29 km), air (Mumbai, 54 km) and road (Mumbai, 50 km).
- Several star and budget hotels are available in Navi Mumbai.
- Vehicles can be parked in bays along the way.
- Navi Mumbai has good medical facilities as well as speciality hospitals. There is a hospital within the port township as well.
- Support infrastructure in terms of pre- and post-production equipment, artistes, technicians, etc., can be sourced easily from Mumbai.
- Detailed security check is made at the entrance of the port and certain items may not be allowed to be carried inside the port premises.

PERMISSION AND FEE DETAILS

AUTHORITY
JNPT Customs

CONTACT DETAILS
Asst. Marketing Manager
Jawaharlal Nehru Custom House, Sheva
Uran Taluka, Raigad District, Maharashtra – 400707
Tel: +91-22-27244700
Mobile: +91-84240-33611
E-mail: jitendramhatre@jnport.gov.in
Web: www.jnport.gov.in

FEE (INR)
INR 25,000 per day (inside the port)
INR 15,000 per day (JNPT area outside)

AUTHORITY
JNPT Board

CONTACT DETAILS
Chairman
Admin Building, Sheva, Uran Taluka,
Raigad District, Maharashtra – 400707
Tel: +91-22-27244001/ 27242290
E-mail: chairman@jnport.gov.in

AUTHORITY
Police Department

CONTACT DETAILS
Senior Inspector
JNPT Township, Nava Sheva, Raigad
Tel: +91-22-27471012
E-mail: ps.nhavasheva@mahapolice.gov.in

FEE (INR)
Police protection charges as applicable, depending on the number of personnel deployed

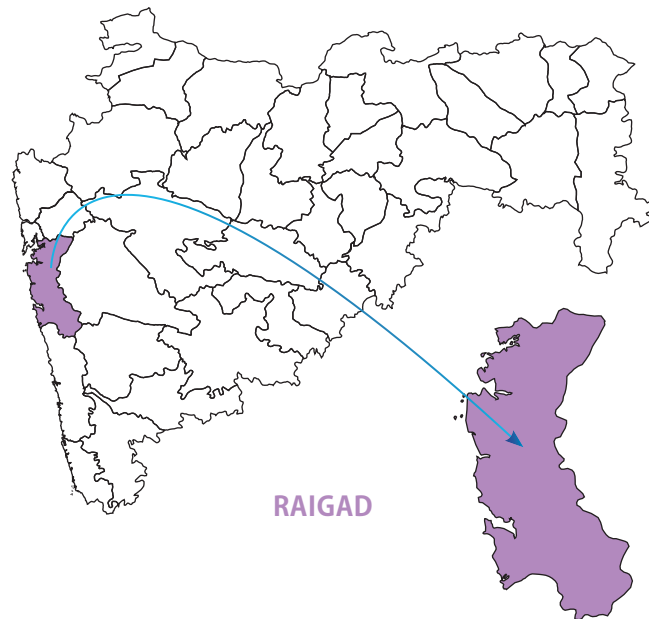




PALM BEACH ROAD – THE MARINE DRIVE OF NAVI MUMBAI

Palm Beach Road is a 10-km road that connects Vashi and Belapur through Sanpada and Nerul. Running parallel to the Mumbai Harbour, the road is flanked by upmarket residential and commercial complexes. The beautifully constructed road is a dream stretch for motorists due to its excellent tarmac and light traffic.

It offers an excellent view of Vashi creek and surrounding mangroves. The vista is a medley of high-rises, commercial complexes, upscale restaurants, green open grounds and glimpses of Vashi creek. Palm Beach Road has provided an excellent backdrop for action thrillers and automobile advertisements.



LOCATION FACT FILE

- Palm Beach Road falls in Raigad district.
- The average maximum temperature is 38 degree Celsius and minimum is 12 degree Celsius.
- It is connected by rail (Vashi railway station, 5 km), air (Mumbai, 28 km) and road (Mumbai GPO, 30 km). The best way to travel to Palm Beach Road is by private vehicles or cabs. There are bus services from Vashi railway station every 15 minutes to residential and commercial locations on both sides of Palm Beach Road.
- Several star category and budget hotels are available in Navi Mumbai.
- Logistics can easily be arranged from Navi Mumbai or Mumbai.
- Parking space is available in Vashi railway station, 5 km away. Special parking permission might be required for vehicles that would transport film equipment.
- The local police station would need prior intimation for the 'bandobast' of the shoot.
- *Welcome, Dhoom, Tarzan-The Wonder Car and Fanaa* are some of the films that have been shot here.

PERMISSION AND FEE DETAILS

AUTHORITY

Navi Mumbai Municipal Corporation

CONTACT DETAILS

Commissioner

Navi Mumbai Municipal Corporation, Ground Floor
Sector-15 A, Palm Beach Junction, CBD Belapur
Navi Mumbai, Maharashtra – 400614
Tel: +91-22-27567051/ 52 / 53
E-mail: info@nmmconline.com
Web: www.nmmc.gov.in

FEE (INR)

Fee ranges from INR 5,000 per hour to INR 10,000 per hour, depending on the location and type of shooting involved

AUTHORITY

Traffic Police

CONTACT DETAILS

Assistant Commissioner of Police

7th Floor, Konkan Bhavan Ext. Building
CBD-Belapur, Navi Mumbai, Maharashtra – 400614
Tel: +91-22-27490476
E-mail: acptraff1.nm@mahapolice.gov.in
Web: www.navimumbaipolice.org

FEE (INR)

Police protection charges as applicable, depending on the number of personnel deployed

AUTHORITY

Police Department

CONTACT DETAILS

Assistant Commissioner Of Police, Admin

Sector 10, CBD Belapur
Navi Mumbai, Maharashtra – 400614
Tel: +91-22-27576287
E-mail: acpadmnm@gmail.com
Web: www.navimumbaipolice.org

FEE (INR)

Police protection charges as applicable, depending on the number of personnel deployed





RAILWAY STATIONS – THE LIFELINE OF MUMBAI

Chhatrapati Shivaji Maharaj Terminus (CSMT), a UNESCO World Heritage Site, serves as the headquarters of Central Railway. Formerly known as Victoria Terminus, it was built in 1887 CE (Common Era) to commemorate the golden jubilee of Queen Victoria’s reign. CST is synonymous with Mumbai and often showcased when the city is the backdrop of a film.

Churchgate Station is one of the busiest stations in Mumbai and gets its name from Church Gate Street that lies to its south. The headquarters building sports an updated and iconic look with a facade that acts as a second skin to the existing building. The facade is an open one since the building is not air-conditioned and depends on natural ventilation.

Mumbai Central is a major railway terminus on the Western Railway line. It was designed by British architect Claude Batley to serve as a junction for both local and inter-city/express trains. The station is divided into two parts. The eastern half serves long distance trains operated by Western Railway while the western half serves commuter trains running on the Churchgate-Dahanu suburban section of Western Railway.



LOCATION FACT FILE

- Mumbai City district has an average high temperature of 34 degree Celsius and a low of 18 degree Celsius.
- Nearby attractions include Flora Fountain, Bombay Stock Exchange, Kala Ghoda, Jehangir Art Gallery and Diamond Market, Haji Ali, Nariman Point, Chowpatty Beach, Worli Sea Face, etc.
- Several star and budget hotels are available across Mumbai.
- Catering facilities and restaurants offering various kinds of cuisine are abundantly available in Mumbai.
- Mumbai has good medical facilities as well as speciality hospitals.
- Mumbai being the hub of Indian cinema, has ample support infrastructure in terms of pre- and post-production equipment, artistes, technicians, etc.
- Films such as *A Mighty Heart*, *Phantom*, *The Villain* and *Kaminey* were shot in Churchgate Station while Mumbai Central was the location for *The Attacks of 26/11*, *Phata Poster Nikla Hero*, *Yeh Jaawani Hai Deewani* and *Hasee Toh Phasee*.

PERMISSION AND FEE DETAILS

AUTHORITY

Central Railways - Public Relations Office

CONTACT DETAILS

Chhatrapati Shivaji Terminus Area
Fort, Mumbai, Maharashtra – 400020
Tel: +91 22-22621576
E-mail: pro@cr.railnet.gov.in

AUTHORITY

Western Railways - Public Relations Office

CONTACT DETAILS

Station Building, Churchgate, Mumbai – 400020
Tel: +91 22-2209 7619 / 2209 7565
E-mail: cpowrly@gmail.com/ cpro@wr.railnet.gov.in
Web: www.wr.indianrail.gov.in

FEE (INR)

- Bank Guarantee – INR 5,00,000
 - Comprehensive Insurance – INR 5 crore
 - License Fee Per Day – INR 1,00,000
 - Other charges may include – moving and stabling, security deposit and liasioning
- www.indianrailways.gov.in/railwayboard/uploads/directorate/traffic_comm/Comm-Cir_2016/cc%20no%2041.pdf

AUTHORITY

Police Department

CONTACT DETAILS

Senior Police Inspector, Theatre Branch
Desk 10, Police Commissioner’s Office, Dr D N Road
Fort, Opposite Crawford Market
Mumbai, Maharashtra – 400001
Tel: +91-22-22620111

FEE (INR)

Police protection charges as applicable, depending on the number of personnel deployed

